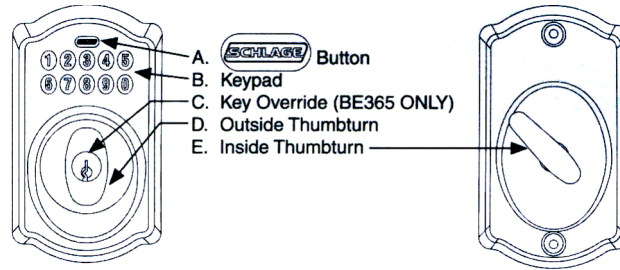



## How to program your Keyless Home Access System

**Make sure you reprogram your lock. The current code may have been given to other people before you moved in.**



Legend:

-  = Schlage Button  
**1** = Specific Number on Keypad  
6DPC = Six-Digit Programming Code  
4DUC = Four-Digit User Code

SCHLAGE Button:


- Lights orange while in programming mode.
- Flashes green when programming is successful.
- Lights red when there is an error
- Press to exit programming mode at any time.
- Wait until SCHLAGE button stops flashing before entering additional codes.

### **Add a user code:**


Note: You can have 3 active codes at one time

6DPC →  → **1** → New 4DUC → Reenter New 4DUC

### **Delete an existing or present user code:**

6DPC →  → **2** → Existing 4DUC → Reenter existing 4DUC

### **Enable/disable all user codes**

1. Disable all user codes: 6DPC →  → **4**
2. Enable all user codes: 6DPC

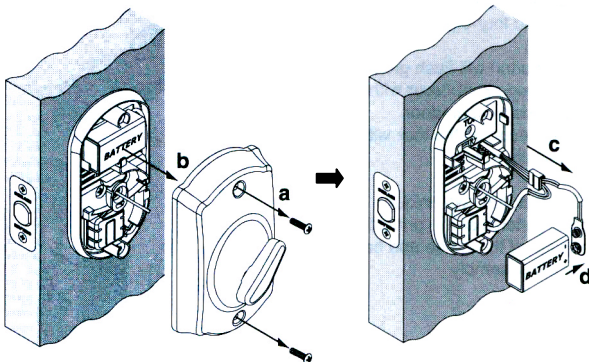
### **Turn beeper on or off (preset is on)**

Note: Lock will still beep when battery is low

6DPC →  → **5**

### **Changing the battery (9V alkaline battery)**

Note: lock will beep and flash red then green when the battery is low. **MAKE SURE YOU REPLACE IT RIGHT AWAY SO YOU DON'T GET LOCKED OUT.**



**\*\*\*IMPORTANT\*\*\***

Your move in 4DUC is: \_\_\_\_\_  
DELETE THIS CODE RIGHT AWAY. IT MAY  
HAVE BEEN GIVEN TO OTHER PEOPLE  
BEFORE YOU MOVED IN.

Your 6DPC is: \_\_\_\_\_